

**cell type:** Li-Ion  
**cell size:** 18650  
**built-in cell:** LG INR 18650 F1L 3350mAh



<https://www.mega-piles.com/>

**Conditions**

**nominal voltage:** 3.6 V

**capacity**  
 nominal: 3400 mAh discharge at 0.2C  
 minimum: 3250 mAh discharge at 0.2C  
 3000 mAh discharge at 1C  
 ta: 20°C; EV(Discharge End Voltage): 2.50V

**discharge**  
 max. continuous discharge current: 4875 mA ta: 0...45°C  
**important:** avoid cell temperature above 60°C  
 discharge end voltage: ≥ 2.5 V (recommended)

**external charge (at +/- poles)**  
 charging method: CC - CV (Constant Current - Constant Voltage)

charge current: 650 mA at standard charge  
 max. charge current: 1625 mA at rapid charge  
 charge end voltage: 4.2 V ± 50mV

charge cut off by time: 5...6 h at standard charge  
 2.75...3.25 h at rapid charge  
 by current drop: 50 mA end current - cut off

**charge via micro USB connector (with USB charger)**  
 supply voltage: 5 V ± 0.25V  
 charge current: ≤ 1150 mA  
 charge time: ≤ 4 h at 1A charge

**internal resistance:** ≤ 100 mΩ at 1kHz, sine wave measurement according to IEC 896-2

**energy:** 12.24 Wh

**protection functions**  
 overcharge cut off voltage: 4.3 V ± 0.05V  
 deep disch.cut off voltage: 2.5 V ± 0.1V  
 overload cut off current: 12 A max.

**LED charge indicator (w. micro USB charge)**  
 lights red during charge  
 lights green end of charge; battery fully charged

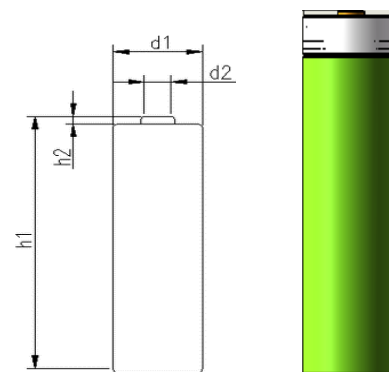
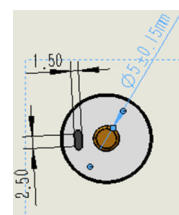
**life time expectance (C>70% of min. capacity)** ≥ 300 cycles at 0.5C charge/discharge rate

**self discharge:** ≤ 2 %/month at 20°C  
 ≤ 5 %/month at 30°C  
 ≤ 10 %/month at 40°C

**ambient temperature range:** 0...45 °C charge  
 - 20...60 °C discharge  
 - 20...25 °C storage max. 1year  
 - 20...45 °C storage max. 3months

**recommended SOC: (SOC = state of charge)** 30...50 % for long-time stoarge

**mechanical specifications**  
 cell dimensions (incl. sleeve)  
 diameter d1: 18.5 ± 0.3 mm  
 diameter d2: 5 ± 0.5 mm  
 height h1: 70.0 - 2 mm  
 height h2: 0.5 + 0.3 mm  
 weight: 49 ± 3 g



111

	<b>ANSMANN Specifications for model:</b> <b>Protected 18650 Li-Ion Battery</b> <b>3.6V 3400mAh w. Micro USB Charge</b>
	data sheet no. / part no.
	supplier no. 704507
	author / date TG / 19.07.2019