

**battery type:** Lithium - Iron Disulfide  
**battery size:** IEC: FR03; ANSI: AAA; L92; Micro  
**chemical system:** Li-FeS<sub>2</sub>



<https://www.mega-piles.com/>

**nominal voltage:** 1.5 V  
**open circuit voltage:** 1.75...1.85 V new battery  
 1.70...1.85 V after 1 year storage at 20°C

**capacity rated:** 1200 mAh all measurements at 20°C ambient discharge at 75ohms load; 24hours/day End Voltage (EV): 0.9V  
 minimum: 1150 mAh discharge at 20mA constant current End Voltage (EV): 0.8V  
 1075 mAh discharge at 500mA constant current End Voltage (EV): 0.8V

**typical service output (new batteries)**

- ≥ 670 cycles load resistor 3.6ohms; EV: 0.9V discharge 15s/m 24h/d
- ≥ 220 min load resistor: 5.1ohms; EV: 0.9V discharge 4min/h 8h/d
- ≥ 460 min load resistor: 10ohms; EV: 0.9V discharge 1h/d
- ≥ 15 h load resistor: 20ohms; EV: 0.9V discharge 24h/d
- ≥ 60 h load resistor: 75ohms; EV: 0.9V discharge 4h/d

**internal resistance:** ≤ 400 mΩ at 1kHz, sine wave measurement full battery

**max. discharge current:** 1500 mA continuous  
 2000 mA pulse

**shelf life:** 10 years under proper storage conditions

**leakage resistance over discharge:** no leakage 20ohms continuous discharge for 48h; ta: 20°C; RH: 60±15%  
**high temperature:** no leakage store 20days at ta: 60°C; RH:90±5%

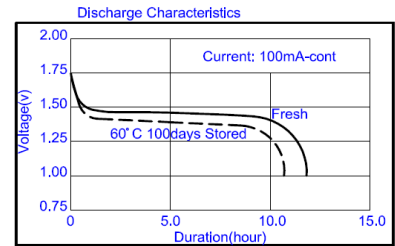
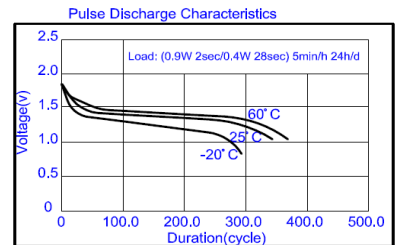
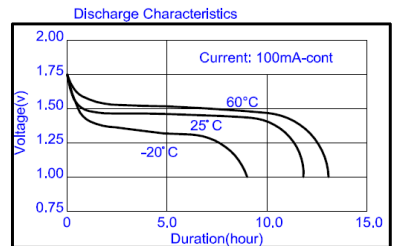
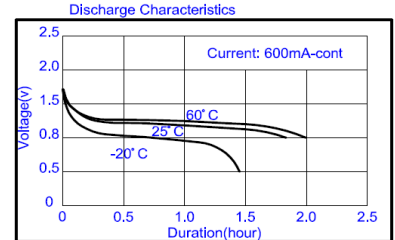
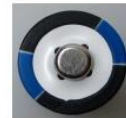
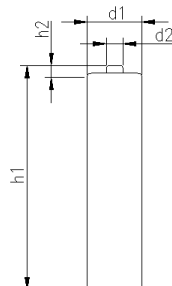
**ambient temperature range:** - 40...60 °C

**recommended storage conditions:** -20....40 °C ambient temperature  
 45...75 % rel. humidity

**mechanical specifications**

**washer:** yes, with white washer

**cell dimensions**  
 diameter d1: 10.35 - 0.4 mm  
 diameter d2: 3.8 - 0.4 mm  
 height h1: 44.5 - 0.4 mm  
 height h2: 1.2 - 0.35 mm  
 weight: 7.5 ± 1 g



	<b>ANSMANN Specifications for model:</b>	<b>Ansmann Lithium Industrial Battery AAA - size 10pcs box</b>
	data sheet no. / part no.	1501-0010
	supplier no.	703331
	author / date	AC / 12.01.2015