

**battery type:**  
**battery size:**  
**chemical system:**

Alkaline Manganese (Mercury free)  
 IEC: LR14; JIS: AM-2; ANSI: C; MN1400; Baby  
 Zn / KOH-H<sub>2</sub>O / MnO<sub>2</sub>



<https://www.mega-piles.com/>

**nominal voltage:** 1.5 V  
**open circuit voltage:** 1.57...1.62 V  
 1.55...1.62 V

**Conditions**  
 new battery  
 after 1 year storage at 20°C

**capacity**  
 rated:  
 7200 mAh  
 6800 mAh  
 minimum:  
 5800 mAh  
 2250 mAh

all measurements at 20°C ambient  
 discharge at 25mA load; 24h/day  
 End Voltage (EV): 0.8V  
 discharge at 20ohms load; 24h/day  
 End Voltage (EV): 0.9V  
 discharge at 75mA constant current  
 End Voltage (EV): 0.8V  
 discharge at 1000mA constant current  
 End Voltage (EV): 0.8V

**typical service output (new batteries)**

≥ 18 h load resistor 3.9ohms; EV: 0.9V  
 discharge 4min/h 8h/d  
 ≥ 18 h load resistor: 3.9ohms; EV: 0.8V  
 discharge 1h/d  
 ≥ 31 h load resistor: 6.8ohms; EV: 0.9V  
 discharge 1h/d  
 ≥ 16 h load resistor: 3.9ohms; EV: 0.9V  
 discharge 24h/d  
 ≥ 100 h load resistor: 20ohms; EV: 0.9V  
 discharge 4h/d

**internal resistance:** ≤ 0.2 Ω

at 1kHz, sine wave measurement  
 full battery

**shelf life:** 7 years under proper storage conditions

**leakage resistance**

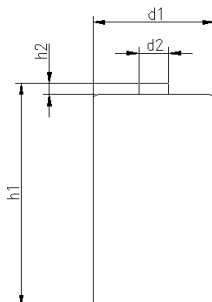
over discharge: no leakage  
 high temperature: no leakage  
 3.9ohms continuous discharge for 48h; ta: 20°C; RH: 60±15%  
 store 20days at ta: 60°C; RH:90±5%

**ambient temperature range:** - 10...50 °C

recommended storage conditions:  
 5...25 °C ambient temperature  
 45...75 % rel. humidity

**mechanical specifications**

cell dimensions  
 diameter d1: 26.0 - 1.0 mm  
 diameter d2: 7.0 - 1.0 mm  
 height h1: 50.0 - 1.0 mm  
 height h2: 2.0 - 0.4 mm  
 weight: 72 ± 3 g  
 package dimensions: 128 x 51 x 50 mm  
 weight (incl. batteries): 730 ± 15 g



	<b>ANSMANN Specifications for model:</b>	<b>Ansmann Industrial Alkaline Battery</b>
		<b>C - size 10pcs colour box</b>
	data sheet no. / part no.	1503-0000
	supplier no.	701381
	author / date	TG / 25.02.2015