

battery type:
battery size:
chemical system:

Lithium Button Cell
 CR1025
 Lithium Manganese Dioxide



<https://www.mega-piles.com/>

nominal voltage: 3.0 V
open circuit voltage: 3.0...3.4 V
 2.9...3.4 V

Conditions
 new battery
 after 1 year storage at 20°C

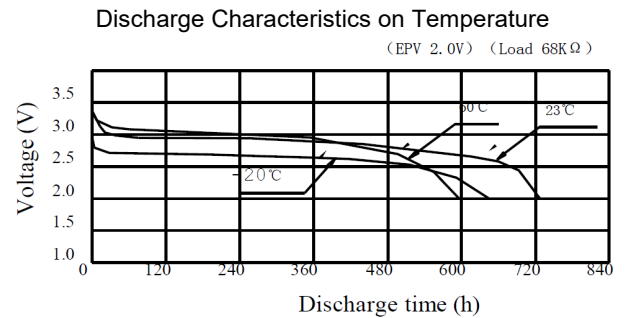
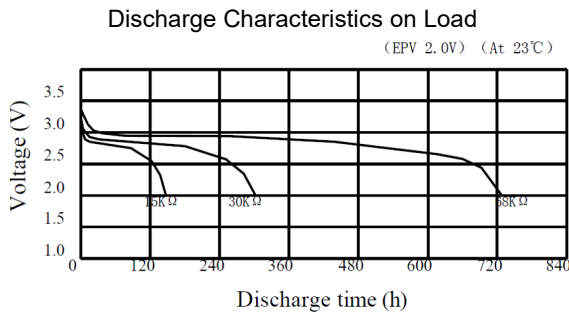
all measurements at 22 ± 2°C ambient

capacity
 rated: 30 mAh continuous discharge at 68kΩ load; 24hours/day
 End Voltage (EV): 2.0V
 minimum: 27 mAh continuous discharge at 68kΩ load; 24hours/day
 EV: 2.0V

standard discharge time
 minimum: 165 h at 18kΩ load (for QC measurement)
 EV: 2.0V

discharge currents
 standard: 0.1 mA
 max. recommended current
 under continuous discharge: 1 mA
 max. recommended current
 under pulse discharge: 5 mA

discharge diagrams:

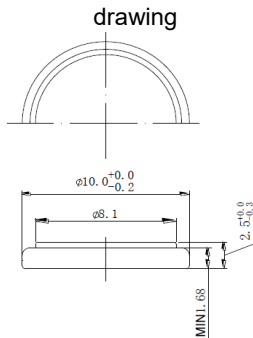


shelf life: 10 years under proper storage conditions (ta: ≤ 22°C; RH: 60 ± 15%)
self-discharge: ≤ 2 % per year (at 20°C ambient temperature)

operating temperature range: - 20...70 °C
storage temperature: 0...30 °C (recommended)

mechanical specifications:

battery
 diameter: 10.0mm +0/-0.2mm
 height: 2.5mm +0/-0.3mm



printed production date
 4 digits (YYMM)
 e.g. 1806 = 2018 June

nominal weight: 0.7 g (approx.)

	ANSMANN Specifications for model:	Lithium Button Cell CR1025
	data sheet no. / part no.	
	supplier no.	704080
	author / date	TG / 01.03.2019