

battery type:
battery size:
chemical system:

Lithium Button Cell (PH-type)
 CR1620
 Lithium Manganese Dioxide



<https://www.mega-piles.com/>

nominal voltage: 3.0 V
open circuit voltage: 3.0...3.4 V
 2.9...3.4 V

Conditions
 new battery
 after 1 year storage at 20°C

all measurements at 22 ± 2°C ambient

capacity
 rated: 80 mAh continuous discharge at 30kΩ load; 24hours/day
 End Voltage (EV): 2.0V

minimum: 75 mAh continuous discharge at 30kΩ load; 24hours/day
 EV: 2.0V

standard discharge time
 minimum: 140 h at 6.2kΩ load (for QC measurement)
 EV: 2.0V

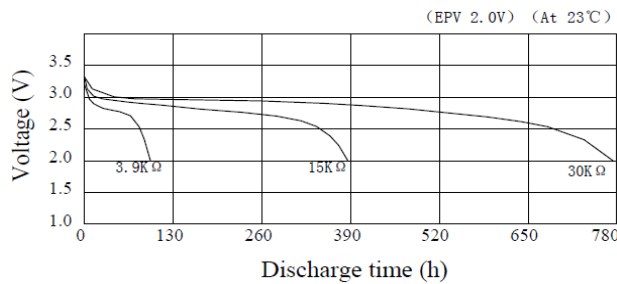
discharge currents
 standard: 0.1 mA

max. recommended current
 under continuous discharge: 1 mA

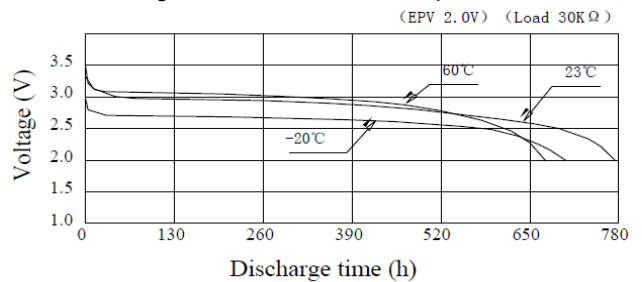
max. recommended current
 under pulse discharge: 5 mA

discharge diagrams:

Discharge Characteristics on Load



Discharge Characteristics on Temperature



shelf life: 10 years under proper storage conditions (ta ≤ 22°C; RH: 60 ± 15%)
self-discharge: ≤ 2 % per year (at 20°C ambient temperature)

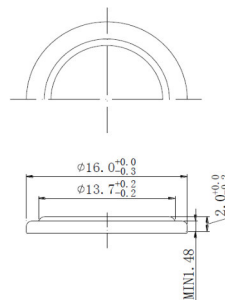
operating temperature range: - 30...65 °C

storage temperature: 0...30 °C (recommended)

mechanical specifications:

outer battery dimensions
 diameter: 16.0mm +0/-0.3mm
 height: 2.0mm +0/-0.2mm

drawing



printed production date
 4 digits (YYMM)
 e.g. 1806 = 2018 June



nominal weight: 1.3 g (approx.)

	ANSMANN Specifications for model:	Lithium Button Cell CR1620
	data sheet no. / part no.	
	supplier no.	704080
	author / date	TG / 29.01.2020