

**battery type:**  
**battery size:**  
**chemical system:**

Lithium Button Cell (PH-type)  
 CR2450  
 Lithium Manganese Dioxide



<https://www.mega-piles.com/>

**nominal voltage:** 3.0 V  
**open circuit voltage:** 3.0...3.4 V  
 2.9...3.4 V

**Conditions**  
 new battery  
 after 1 year storage at 20°C

all measurements at 22 ± 2°C ambient

**capacity**  
 rated: 620 mAh continuous discharge at 7.5kΩ load; 24hours/day  
 End Voltage (EV): 2.0V

minimum: 580 mAh continuous discharge at 7.5kΩ load; 24hours/day  
 EV: 2.0V

**standard discharge time**  
 minimum: 165 h at 910Ω load (for QC measurement)  
 EV: 2.0V

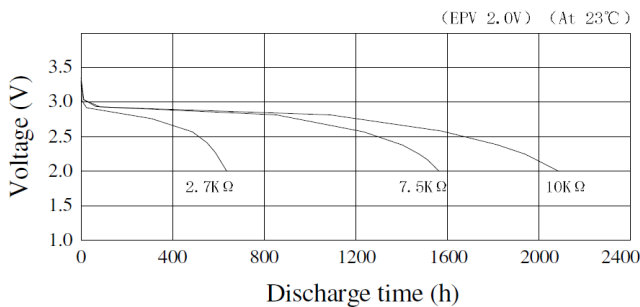
**discharge currents**  
 standard: 0.2 mA

max. recommended current  
 under continuous discharge: 6 mA

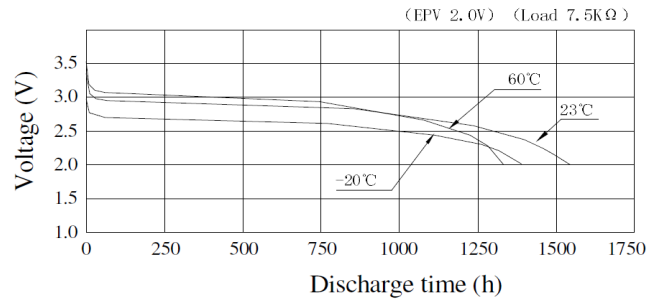
max. recommended current  
 under pulse discharge: 30 mA

**discharge diagrams:**

Discharge Characteristics on Load



Discharge Characteristics on Temperature



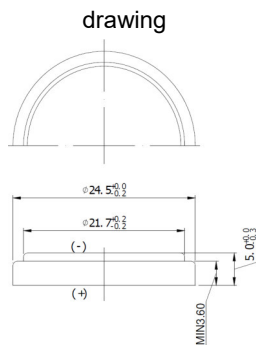
**shelf life:** 10 years under proper storage conditions (ta: ≤ 22°C; RH: 60 ± 15%)  
**self-discharge:** ≤ 2 % per year (at 20°C ambient temperature)

**operating temperature range:** - 30...65 °C

**storage temperature:** 0...30 °C (recommended)

**mechanical specifications:**

outer battery dimensions  
 diameter: 24.5mm +0/-0.3mm  
 height: 5.0mm +0/-0.3mm



printed production date  
 4 digits (YYMM)  
 e.g. 1806 = 2018 June

nominal weight: 6.9 g (approx.)

	<b>ANSMANN Specifications for model:</b>	<b>Lithium Button Cell CR2450</b>
	data sheet no. / part no.	
	supplier no.	704080
	author / date	TG / 08.10.2019