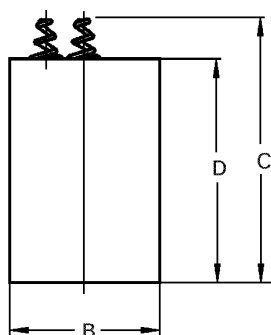




<https://www.mega-piles.com/>

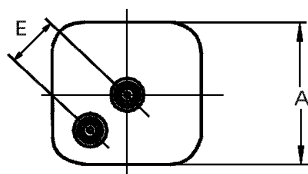
Type Designation	430
Designation IEC	4R25
System	Zn-MnO <sub>2</sub> (Zinc Chloride)
Shelf Life (Coding)*	3 years
Nominal Voltage [V]	6.0
Typical Capacity C [mAh]	7500 (discharge with high-resistance)
Permissible Temperature Range	- 10 °C ... 50 °C
Weight, approx. [g]	570
Volume [ccm]	400



Dimensions [mm]

min: max:

A	65	67
B	65	67
C	108	115
D	97	102
E	23	27



**Typical Capacities (at 20°C):**

Discharge Type	Load	End Voltage[V]	3.6
Portable lighting 30m/d,7d/w	8.2 Ω	Time [h]	7.9
		Capacity [Ah]	4.2
		Energy [Wh]	18.3
Discharge Type	Load	End Voltage[V]	3.6
Portable lighting 30m/h,8h/d,7d/w	9.1 Ω	Time [h]	8.50
		Capacity [Ah]	4.06
		Energy [Wh]	17.78
Discharge Type	Load	End Voltage[V]	3.6
Road warning lamps 12h/d,7d/w	110 Ω	Time [h]	174
		Capacity [Ah]	7.5
		Energy [Wh]	37.3

**No publication or circulation of data to third parties without consent of VARTA Consumer Batteries**

\* In consideration of typical loss of capacity at storage and application.