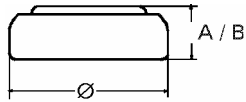


Data Sheet

Type Number 20397
Designation IEC SR 59
System Silver oxide / Zinc /
 NaOH - Electrolyte



Nominal Voltage 1,55 V
Typical Capacity C 23 mAh
 Load 20 kOhm, at 20°C down to 1.2 V

Weight (approx.) 0,5 g
Volume 0,11 ccm
Coding Date of Manufacturing
 Month/Year

Temperature Ranges

Storage	min	max.
Discharge	-10°C	65°C
	-10°C	65°C

Dimensions

Diameter (Ø)	min	max.
Height (A/B)	7,55	7,9
	2,3	2,6

Segment
 Watch

Main Applications
 Watch
 Photo
 Electronic

Typical Capacities (at 20°C)

Discharge Type	Load	End Voltage: 1.2 V
Continuous	20000 Ω	Time: 320 h
24h/d, 7d/w		Capacity [mAh]: 23
Current [µA]:	78	Energy [mWh]: 33