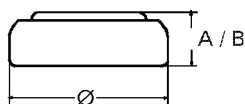


## Data Sheet

**Type Number** ..... 20371  
**Designation IEC** ..... SR69  
**System** ..... Silver oxide / Zinc /  
 NaOH - Electrolyte



**Nominal Voltage**..... 1,55 V  
**Capacity** ..... 30 mAh  
 (33 kOhm continuous load at 20°C down  
 to 1,2 Volts)

**Weight**..... 0,57 g  
**Volume**..... 0,14 ccm  
**Coding**..... Date of Manufacturing  
 Month/Year

Dimensions	min.	max.
Diameter (Ø) .....	9,25 mm	9,5 mm
Height (A/B) .....	1,85 mm	2,1 mm

**Operating Temperature**..... 0°C - 60°C  
 (60°C only 40 days)  
**Self Discharge**..... Less than 10%  
 per year at 20°C

**Segment**..... Watch

**Main Applications**..... Watch  
 Photo  
 Electronic

**Typical Discharge Capacities (at 20°C)**

Discharge Type	Load	End Voltage:	1,2 Volts
Continuous 24h/d,7d/w	33000 Ω	Time:	710 hours
		Capacity:	30 mAh
		Energy :	43 mWh

